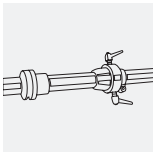


stream JET 180

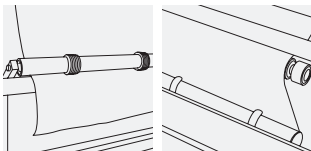


**STREAM JET 180** marker making plotter. Part of the new and revolutionary generation of Algotex plotters, as an entry-level plotter, the STREAM JET provides high output at an affordable price. Quiet, it interfaces with any CAD system. Comes with its own Windows 9X/ME/NT/2000 compatible software.



#### PRINTING

- prints at constant speed, therefore is not influenced by marker density, shapes and dimensions of pieces, amount of annotation, notes and symbols
- valid printing width is 183 cm or 72 inches
- output is **40 average mt<sup>2</sup>/hr** or **47 average square yards/hr** at 102 dpi
- output is 20 average mt<sup>2</sup>/hr or 23 average square yards/hr at 254 dpi
- patented electronic paper tension control permits precision plotting with a fixed tolerance in dimensions of +/- 0.002 mt
- simultaneous double graphic resolution (102 and 254 dpi), as regulated by operator, always adjustable as with various definitions applicable to any particular design
- standard or bold line qualities, to be selected as required within the marker list
- ink reservoir refillable with disposable cartridges
- electronic control of ink level with reserve warning and interruption of



- plotting only at completion of the marker being plotted
- automatic and manual head cleaning

### PRINT SUPPORT

- uses any type of paper (standard, recycled, thermal adhesive, etc)
- paper feed spool maximum weight of 30 kg or 66 lbs
- two paper take-up options:
  - on aluminum spool for high production or for overnight printing
  - free take-up to facilitate quick unloading of markers without plotter interruption (OPTIONAL)
- electronic warning for end of paper roll
- electronic warning for paper jams

Unique to the new ink jet head on the STREAM JET 180 series.



Self-test and serial auto-diagnosis.



### MECHANICAL

- prints without touching the paper
- simplified lateral printing movement provides for reduction of mechanical stress and significant maintenance cost savings

### ELECTRONICS

- SELF-TEST: The plotter offers a series of easy to use auto-tests that permit controlling operational status and makes resetting the plotter possible when necessary. The auto-tests and parameters reside in the plotter's onboard memory and may be accessed by the operator directly, without using the external PC
- AUTO DIAGNOSIS: At power ON, the system cycles through an auto diagnosis which controls all states of functionality. In the event of a malfunction, a series of questions appears on the plotter's display to assist the operator in resolving the problem. When confronted by more serious circumstances the operator is guided by the onboard system through a troubleshooting itinerary in order to relate pertinent information to Algotex's Support Center and receive a specific diagnosis to solve the problem
- CONTROL FROM REMOTE WORKSTATIONS: The possibility to operate the plotter and manage the plotting list, or simply inspect plotting status, from remote workstations, also via internet connections

When the plotter is connected to a PC that is part of a network, the SELF-TESTS and AUTO DIAGNOSIS may be viewed in real time at a remote Support Center, permitting authorized technicians to intervene directly on the status of the plotting system

### DIMENSIONS

- length: 2646 mm or 104 inches
- height: 1.05 m or 42 inches
- width: 48 cm or 19 inches
- weight: 100 kg or 220 lbs

### CONFORMITY

- EU
- universal electric compatibility
- 100 W absorption
- Frequency: 50/60 Hz
- temperature: 10° - 40° C or 50° to 104° F

## ALGOTEX

via di Mezzo Levante, 1733  
40014 Crevalcore (Bologna) Italy

tel: ++39 051 680 0232  
fax: ++39 051 680 1252

e-mail: mail@algotex.it  
www.algotex.com